



Dynham Road NW6

Parkheath  
*Sold on Service*





**Dynham Road  
NW6**

**Asking Price £450,000**

Superb 2 bedroom apartment

Newly renovated throughout

Private Entrance

513 sq ft / 47.7 sq m

Communal garden access

Bright south facing 22" open plan kitchen  
reception room

Master bedroom with fitted storage

Amenities of West End Lane a short walk  
away

6 minute walk to West Hampstead stations  
(Overground, Jubilee and Thameslink)

*\*Property has been digitally staged\**

Belsize Park  
208 Haverstock Hill  
NW3 2AG  
Sales 020 7431 1234  
Lettings 020 7431 3104  
nw3@parkheath.com

South Hampstead  
8a Canfield Gardens  
NW6 3BS  
Sales 020 7625 4567  
Lettings 020 7644 0800  
nw6@parkheath.com

West Hampstead  
192 West End Lane  
NW6 1SG  
Sales & Lettings  
Tel 020 7794 7111  
192@parkheath.com

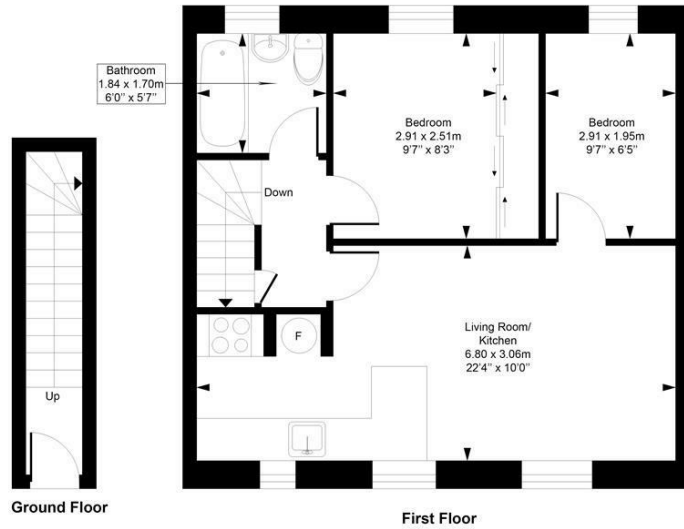
Kentish Town  
148 Kentish Town Rd  
NW1 9QB  
Tel 020 7485 0400  
kt@parkheath.com

Kensal Rise  
54-56 Chamberlayne Rd  
NW10 3JH  
Tel 020 8960 4845  
kensal@parkheath.com

Property Management  
192 West End Lane  
NW6 1SG  
020 7433 6174  
pm@parkheath.com

**Parkheath**  
*Sold on Service*

**Dynham Road**  
Approximate Gross Internal Area = 47.7 Sq m / 513 sq ft



Measured in accordance with RICS guidelines. Every attempt is made to ensure accuracy  
However all measurements are approximate.  
The floor plan is illustrative purposes only and is not to scale  
ELLIE CLAIRE PHOTOGRAPHY LTD  
[www.ellieclairephotography.com](http://www.ellieclairephotography.com)



The particulars do not constitute part of an offer or contract. The particulars, including text, photographs and plans, are for the guidance only of prospective purchasers/tenants and must not be relied upon as statements of fact. The descriptions provided therein represent the opinion of the author and whilst given in good faith should not be construed as statements of fact. Nothing in these particulars shall be deemed a statement that the property is in good condition or otherwise or that any services or facilities are in good working order. All measurements are approximate